



# Expanding Our Care

TO MEET THE NEEDS OF OUR COMMUNITY

Comments from Grateful Family Members

*“I absolutely positively adored all the professionals that my family and I came into contact with while Capital Caring was caring for my mom for the last 2 months of her life. No words can adequately express my gratitude for Capital Caring and all their employees.”*

*“We received excellent hospice care for my father. The grief counseling was also extremely helpful.”*

## Broadening our services and doing the right thing for our patients and our community

MESSAGE FROM TOM KOUTSOUMPAS

In the early 1970s, I watched the wife of my good friend lose her battle with cancer after a long, courageous fight. It was a painful period, stretching out over several years. And despite getting care from the best doctors, the experience—for her, her family and friends—was horrible. She was only 49 when she died.

That’s when it dawned on me: Our healthcare system was ill-prepared to deal with patients with life-limiting and terminal illnesses.

Fortunately, we’ve come a long way in the 40+ years since then. At that time, the concepts of hospice and palliative care were virtually unknown in America. Today, they are well-established disciplines, delivering care, comfort and compassion to thousands of individuals and their families each year, most often in the familiar surroundings of their own home.

I’m proud to have been part of that evolution. And I’m equally proud to have just recently celebrated my one-year anniversary as the leader of this wonderful organization. It’s a position I am both honored and humbled to hold.

Honored...because I’ve had the chance to work with an amazing team of professionals who are doing one of the hardest—yet possibly most rewarding—jobs on the face of the earth: improving life and its quality for terminally ill patients and their families. From clinicians to clergy, and social workers to volunteers, these dedicated individuals leave me in awe of all they do. As you review the impressive facts and figures on page 6, I’m sure you’ll agree.



Tom Koutsoumpas

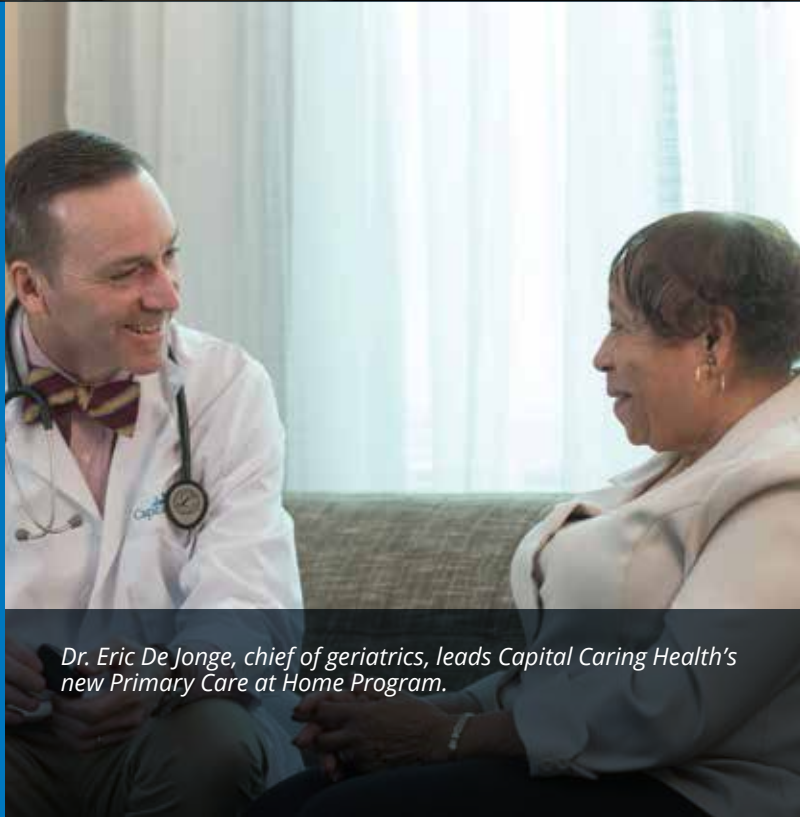




*The Capital Caring Health Largo team held a special birthday celebration for Phoenix who turned 1. Phoenix was taken off life support at five months old; her mother was told she would only have six hours to live. Against all odds, and under the care of our Capital Caring Health team, Phoenix is spending more time in the comfort of her home surrounded by her family. Baby Phoenix is shown with her mother, Monique, and Yolanda Hightower, RN Case Manager at Capital Caring Health.*



*Capital Caring Health has proudly served members of the military since our founding in 1977, providing a full suite of care and services, plus recognition ceremonies and programs to match veteran patients with our veteran volunteers.*



*Dr. Eric De Jonge, chief of geriatrics, leads Capital Caring Health's new Primary Care at Home Program.*

### **Capital Caring Health: New Name. More Care.**

#### *Expanding services to meet the needs of the underserved*

Although we have made significant strides in addressing the healthcare needs of those with serious illnesses, the volume of work that remains to be done—in our community, our region and our nation—is daunting. The growing problems and changing needs of the underserved, the elderly, and other at-risk populations demand innovation, talent and drive. I'm pleased to say that we are answering the call.

As one of the largest and oldest non-profit providers of hospice and advanced illness care in the mid-Atlantic region, Capital Caring recently added **Health** to our name, to reflect our expanded offerings and new initiatives that will redefine how we serve the community.

We will now feature new programs and expanded services to meet a greater continuum of healthcare needs throughout the District of Columbia, Maryland and Virginia.

We are expanding and improving care for our aging veteran population. Our reinvigorated Veteran's Health & Support Services program is helping veterans—who are often unaware of the benefits they are entitled to or stymied by government bureaucracy—cut through the red tape and get the care and other support they need, have earned and deserve.

Another problem to overcome: What to do with the growing senior population that is trying to age in place while coping with multiple, chronic health conditions? Our answer is to create Primary Care at Home for elders, headed by one of the nation's pre-eminent specialists in aging. When the program launches later this year, it will offer a complete spectrum of at-home care, assuring continuity and consistency from one stage of life to the next.

And for our youngest patients, we are redoubling our efforts to assure they get the highly specialized care they need, something we've done right from the start. At a time when only about 10 percent of the 4,500 hospices in the United States accept children and adolescents, we are partnering with Children's National Medical Center to assure an even greater level of customized care and service.

In short, I believe we've accomplished a lot in the last 12 months. As we prepare for the future, I hope you will remain as committed as we are to doing the right thing... for everyone, of any age...who needs our help.

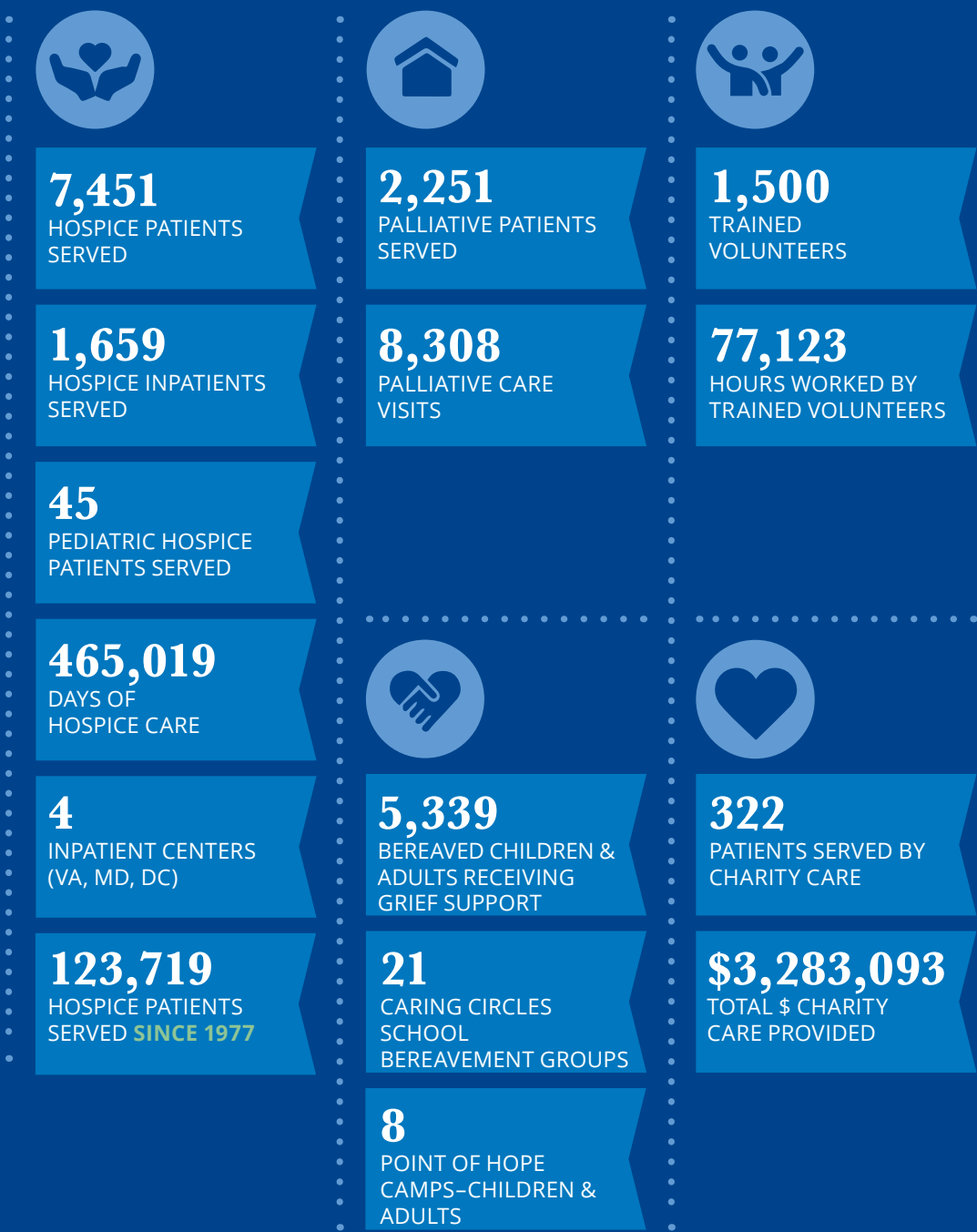
Thank you for your ongoing support of the vital work we do together.

Sincerely,

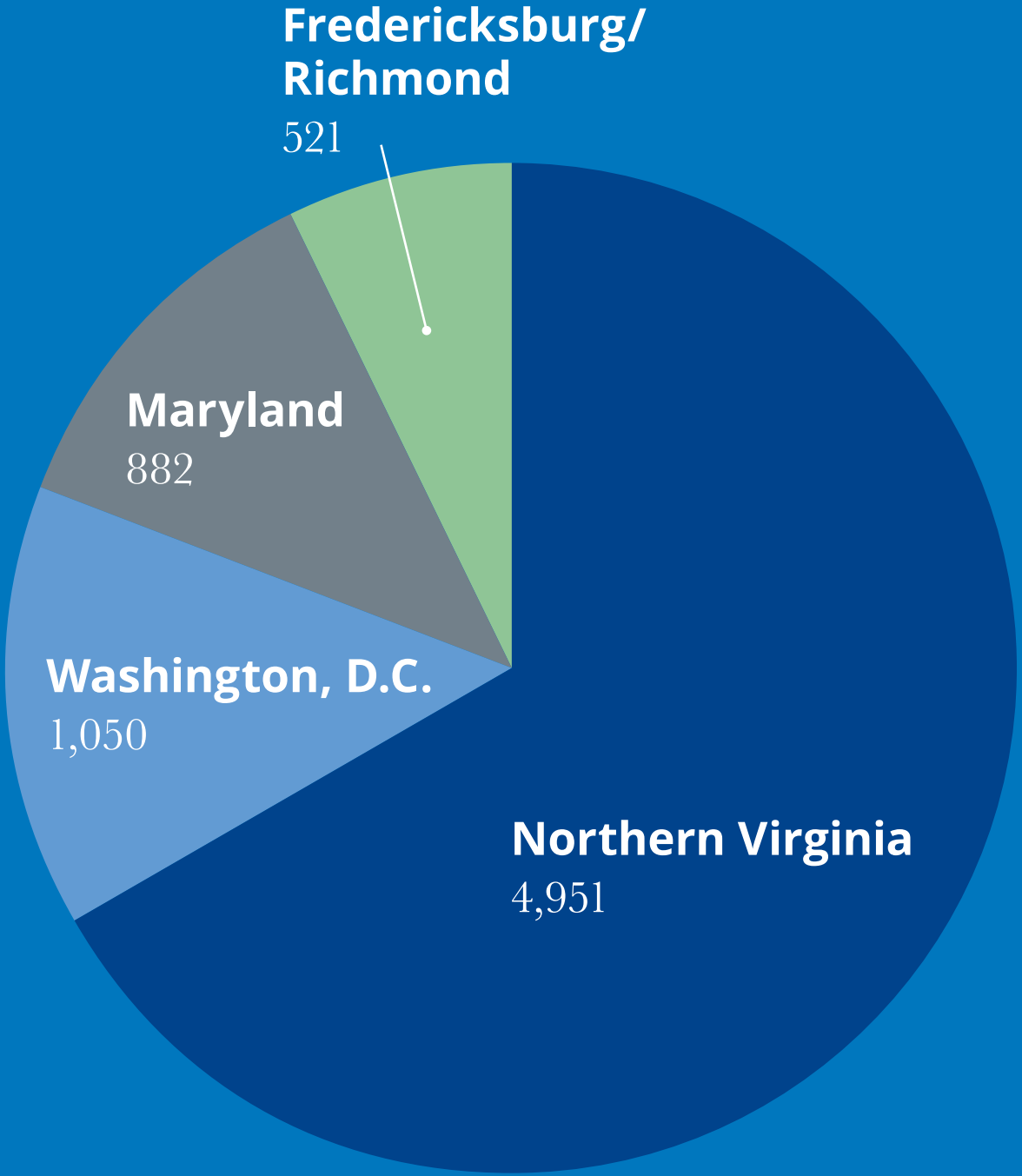
Tom Koutsoumpas  
President and CEO

# Capital Caring Health 2018

## A Year in Review



Number of Patients Served by Service Area







Capital Caring Health is proud to be a Commemorative Partner with The U.S. Vietnam War Commemoration. Pictured from left: Tom Koutsoumpas, Capital Caring Health President & CEO; Molly Brooks, Executive Director, Clinical Innovations; Lt. Col. David Benhoff, USMC (ret.), Director, Veteran's Health & Support Services; and Keith Everett, Chief Performance & Compliance Officer.

600,000

Veterans over 65 living in Virginia, Maryland, Washington, D.C

## VETERAN'S HEALTH & SUPPORT SERVICES

# Addressing Needs in our Communities

### Doing The Right Thing For...Those Who Served

Long after the uniform is carefully mothballed and the medals tucked safely away, many of our nation's veterans feel sidelined themselves. They're in a kind of limbo—honored in public for risking life and limb for their country, yet suffering in private as they face advancing age, service-related diseases and disability without a clear path to the help they need.

Capital Caring Health has proudly served members of the military since our founding, providing a full suite of care and services, plus recognition ceremonies and programs to match veteran patients with our veteran volunteers. But last year, we asked ourselves if we could do more.

The answer, according to Lt. Col. David Benhoff USMC (ret.), was "yes."

A Capital Caring Health volunteer coordinator and care representative since 2016, Benhoff was deployed several times during his 25-year military career. And he knew from personal experience that many area veterans were not getting the special care and assistance they needed. The problem rests largely in the complex and time-consuming process required to unlock government benefits.

So in 2018, Capital Caring Health created a new department devoted exclusively to Veteran's Health and Support Services, with Benhoff as director.

"What veterans and their families really need most is a 'boots-on-the ground' approach—help in accessing more in-home caregiver support and veteran benefits, such as disability compensation, pensions, and healthcare," says Benhoff. "We've started working directly with state-level Veterans Affairs offices to assure the vets at Capital Caring Health get what they need, earned and deserve."

### Meeting the needs for a growing veteran community

Capital Caring Health is partnering with local and regional VA medical facilities, VA community-based outpatient clinics and active duty medical installations to raise awareness of how palliative, hospice and bereavement services can support their medical missions. As part of that effort, second-year medical residents from Walter Reed National Military Medical Center and Fort Belvoir Community Hospital train with Capital Caring Health experts for a week, as an introduction to advanced illness and end-of-life care.

In 2014, a VA study estimated nearly 600,000 veterans over 65 live in Maryland, Virginia and Washington, D.C. As the region's population of retired military continues to grow, so too will the need for more tailor-made services and programs.

Capital Caring Health will be ready.

*"Overall, I now have a better understanding of how hospice and palliative care services operate and I will better be able to explain to patients and their families what to expect when they are transitioned to hospice or palliative care. Not only do I better understand the logistics involved in this kind of care, but I saw the caring hearts of the Capital Caring staff."*

*Internal Medicine Resident: Walter Reed National Military Medical Center*

### Q&A with David Benhoff, Director, Veteran's Health & Support Services

*Q: What is your goal for Capital Caring Health's Veterans Program?*

A: The goal of our veterans program is to not only to continue to recognize and honor military veterans, but also provide true meaningful help and support to our veterans – from assistance with benefit acquisitions to in-home caregiver support, and help with household tasks like mowing lawns and general home maintenance.

*Q: What type of support do veterans need as they age in place?*

A: Many veterans suffer from ailments related to their service and some may have not pursued VA benefits for which they may be eligible. Additionally, many of our veterans are isolated and may just need a *Battle Buddy* to sit with and talk about their experiences.

*Q: What drives your passion for supporting veterans?*

A: There are an abundance of resources and organizations helping younger veterans, which is awesome; however, there are so few helping the older veterans. I feel like our older veterans are forgotten, and I want to do something about that.

Many veterans from the Vietnam, Korean War and WWII era were raised to not ask for help. They have all done so much for our nation, now they need someone to advocate for them.



David Benhoff

50%

The number of veterans and spouses of veterans that Capital Caring Health cared for in 2018



Tom Koutsoumpas and Dr. David Steinhorn at 2018 Passion for Caring Gala.



Teens who suffered the loss of a loved one were special guests on ABC 7s Let's Talk Live sharing about their Making Memories Taylor Swift Concert Experience.



Our Pet Therapy Program offers comfort to bereaved families.

## CHILDREN'S HOSPICE & PALLIATIVE CARE

### Doing The Right Thing For... Our Youngest Patients

When a child has a terminal or life-limiting illness, it assaults our sense of what's right. In the natural order of things, we expect kids to outlive parents and grandparents.

The reality, however, is often different—something that the visionary founders of Capital Caring Health clearly knew. Since opening our doors in 1977, the care of infants, children, and adolescents has been a cornerstone of our foundation. In fact, Capital Caring Health today is one of the oldest and largest providers of palliative and hospice pediatric care in the nation. Thanks to donor support—including \$450,000 raised during our 2018 Gala—we are now taking the pediatric program to the next level... for both children in need of care, and children in need of solace from the death of a loved one.

### Surrounding Families with Care and Support

In 2018, we launched a Virtual Pediatric Consultative Rounds program in conjunction with our long-standing partner, Children's National Medical Center—one of the nation's foremost children's hospitals. Led by Dr. David Steinhorn, Medical Director, Hospice and Palliative Care Services for children at Capital Caring Health, our team uses video and web-based technology to

review symptoms, treatment and support services with Children's pediatric experts in real time. As a result, we are improving pain and symptom management on the spot, for an even greater level of customized care and comfort for our youngest patients and their family members. In the near future, we have plans to expand this program even further.

At the other end of the spectrum, we also serve children suffering from the loss of a parent, sibling, or other loved one. Through an in-school grief club, special camps, pet therapy and more, our pediatric bereavement programs help children try to understand, cope with and process the bewildering death of someone close to them.

### Pet Therapy: Offering Grieving Children the Comfort They Need

Toward that end, the pet therapy program got a boost from Lois and Meredith Baily—mother and sister of Regan, who died tragically young. Knowing that fuzzy friends play an important role in healing, they established Regan's Caring Zone to reflect her love of animals and love of life. By providing certified therapy pets, the new program helps bereaved children experience unconditional love...and eventually their own feelings. We think it's just what the doctor ordered.

### Q&A with Tara Hoit, Director, Children's Hospice & Palliative Care

#### Q: What are some of the special needs of children receiving hospice and palliative care?

A: Children who engage in our palliative or hospice care are experiencing a life-limiting illness that affects their day-to-day life. Most of the children have spent a lot of time in the hospital undergoing invasive treatments and partaking in clinical trials with the hope of a cure.

#### Q: How does Capital Caring Health for Kids support both the patients and their families?

A: We provide holistic symptom-directed care encompassing the social, emotional and spiritual needs of children facing serious illness. We are committed to this care philosophy for the entire family as the effects of long-term illness can have a huge impact on everyone who loves the child. By providing 24/7 access to a hospice pediatrician and pediatric certified nurse, the physical needs of the child are addressed in the home or in one of our inpatient centers. While they can still pursue the full menu of curative measures available to them, they can be at home with our support. Our team comprised of a social worker, chaplain and child life specialist are there to advocate for the child's wishes, help the entire family cope with the emotional distress of late-stage illness, and connect them to resources for additional support.

#### Q: What drives your passion for the Capital Caring Health for Kids Program?

A: The children in our program teach me every single day what's important in life. They find meaning in small moments that many of us miss like the way their dad's whiskers tickle their cheeks or how the reflections of light on the floor make interesting patterns that fuel their imagination. Because many of them are too young to understand what the future holds for them, they don't allow those feelings of dread affect their day. They still want to play and discover their world even if their world consists of a hospital bed in the living room. This has given me what I call my "child goggles." I can put them on when I start to get uptight about traffic or some small mishap. They are the lens through which I try to see how special life is for all of us, even if it's not as long as we'd hoped.



Tara Hoit

5,330

Bereaved children and adults receiving grief support

45

Children Hospice patients serve in 2018

21

Caring Circles School Bereavement Groups



# Celebrating Capital Caring Health Employees

Our team of 800-plus employees go above and beyond to care for our patients and provide support to families on a daily basis. Each month, an employee is recognized with the Capital Caring Health CeCa Award based on employee nominations. The award recognizes employees for demonstrating qualities such as teamwork, exceptional patient care and dedication to work.



**Angela Rodriguez,**  
*Certified Nurse Assistant,  
Capital Caring Health  
Center, Washington D.C.*  
“I love working with our  
CNA and Nursing staff at  
the Providence Inpatient  
Unit. They are hard-  
working and they take  
pride in what they do.”



**April Brent,** *Care  
Coordinator, Largo*  
“What I adore the most  
about being a Hospice  
Liaison/Nurse is the  
opportunity to meet  
people, provide a listening  
ear and, if needed, a  
shoulder to cry on, and to  
be there for our patients  
and families so they are  
not alone.”



**Danice Franklin,**  
*Financial Case Manager,  
Largo*  
“What I like most about  
working at Capital Caring  
Health is the support,  
care and empathy we  
provide. One story that  
I will always remember  
is a patient who wanted  
to go to the beach “one  
last time.” She needed a  
special wheelchair to get  
her through the sand; we  
made that happen. It’s  
little things like this that  
makes me proud to be  
a part of Capital Caring  
Health.”



**Mia Debarbieri,**  
*Area Manager, Patient  
Advocacy, Leesburg*  
“I’ve had the privilege  
of working for Capital  
Caring Health for six  
years. I’ve often been  
asked how I remain  
positive and optimistic  
when most of my life  
revolves around being  
of service to those that  
are at the end of theirs.  
The answer is simple: I  
believe in our vision and  
mission. I am in constant  
awe of the invaluable and  
compassionate care that  
we provide families in our  
community.



**Olive Uwamaliya, RN**  
*Case Manager, Capital  
Caring Health Adler  
Center on the Van Metre  
Campus, Aldie*  
“I enjoy helping the  
patients in our community  
live comfortably and enjoy  
their life!”



**Shantal Williams,**  
*Manager, Volunteer  
Services, Largo*  
“I love my job because  
no day is ever the same.  
I feel like the work I do  
makes a difference to the  
people we serve and our  
community. I know when  
I go home that I truly did  
something meaningful and  
important.”



**Sherri Parker, Social  
Worker, Arlington –  
Capital Caring Health  
Halquist Center**  
“Capital Caring Health has  
given me the opportunity  
to be part of a team where  
everyone is working  
toward a common goal  
– to care for our patients  
and families in a holistic  
way, helping make end  
of life a meaningful and  
positive experience.



**Stacy Brown, LPN,  
Leesburg**  
“The ability to help  
someone when they  
need help the most  
is paramount. I think it’s  
the kindest, most loving  
thing a person can do for  
another person, whether  
it be a nurse, a CNA or  
a family member. Every  
single day it’s a little  
different and you meet  
people where there are  
– through the challenges  
and their smiles. I just find  
it fulfilling, I love my work.”

The following employees were recognized in 2018. Several CeCa Award Winners also shared what they enjoy most about working at Capital Caring Health in the feature below.

**Carla Thompson,**  
*Chaplain, Alexandria and  
Karen Perez,  
Housekeeper, Halquist  
Memorial Inpatient  
Center,* were also  
recipients of the CeCa  
Award in 2018.



# Celebrating Capital Caring Health Volunteers

*Volunteers don't necessarily have the time; they just have the heart!*

In 2018, 77,000-plus hours were given by volunteers in support of our Mission.

Capital Caring Health would not exist without our 1,500 volunteers. In 1977, our organization was founded by a group of dedicated volunteers, deeply committed to making a profound and positive impact in our community.

Our talented and compassionate volunteers provide companionship and support to patients and their families, help with special events and lend a hand with administrative projects throughout Capital Caring Health.

We are so thankful for our volunteers. To learn about volunteer opportunities, [www.capitalcaring.org](http://www.capitalcaring.org).





# Welcome to the New Members of the Capital Caring Health Board of Trustees

IN 2018, CAPITAL CARING HEALTH HAD THE HONOR OF WELCOMING TWO NEW MEMBERS TO THE BOARD OF TRUSTEES – WILLIAM “BILL” NOVELLI AND LYNN MENTO.



**Ms. Lynn Mento** is the Executive Director of Friends of the National Zoo (FONZ), the nonprofit organization dedicated to supporting the Smithsonian’s National Zoo and Conservation Biology Institute. Prior to her role at FONZ, Ms. Mento oversaw membership and member engagement at AARP and has served in a variety of leadership positions at marketing and advertising agencies in Washington, D.C., Pittsburgh, and New York City. Ms. Mento has also been a longtime supporter of Capital Caring Health and past member of the Board of Trustees.



**Mr. Bill Novelli** is a professor in the McDonough School of Business at Georgetown University and the creator of the Global Social Enterprise Initiative at the School. He is also Co-Chair of the Coalition to Transform Advanced Care (C-TAC), a national organization dedicated to reforming advanced illness care by empowering consumers, changing the health care delivery system, improving public policies and enhancing provider capacity. Mr. Novelli’s extensive experience also includes serving as President and CEO of AARP, as well as a recognized leader in social marketing and social change leading international marketing as the co-founder of public relations firm Porter Novelli.

## A LOOK AT 2018 COMMUNITY EVENTS

Throughout 2018, Capital Caring Health hosted a variety of events to help further the philanthropic mission of the organization and help expand access to hospice and palliative care for families. As one of the nation’s oldest and largest nonprofit hospice and palliative care providers, Capital Caring Health serves an important role to provide a voice to families facing advanced illness especially in our nation’s Capital.

**\$450,000 raised at Gala supporting children hospice and palliative care**  
Raising awareness about the specialized services required for child patients and their families was the focus of the annual Capital Caring Health Passion for Caring Gala. More than 400 community members gathered at the Marriott Marquis Washington DC on Nov. 17 to help raise \$450,000 for programs and services benefiting some of the youngest, and most vulnerable patients.



2018 Passion for Caring Gala Co-Chairs Lisa and Alan Zuccari (center) along with their family and Co-Chair Scott Stewart (second from left) at the event on November 17.



Capital Caring Health President and CEO Tom Koutsoumpas (left) with Dr. David Steinhorn (right) of the Children’s National Medical Center’s PANDA Palliative Care Team, which received the annual Passion for Caring Award in recognition of their ongoing partnership with Capital Caring Health.

# Thanks for supporting Capital Caring Health





**Annual Heritage Society Brunch**

Members of the Threshold Choir perform at the annual Heritage Society Brunch on June 7 to recognize individuals who have included Capital Caring Health in their planned giving.



**Capital Caring Health Day on the Hill**

Congressman Earl Blumenauer (D-OR) speaks at the Policy, Progress and Future Prognoses Hill Briefing to help improve care for those with advanced illness on May 9.



**Making Memories Taylor Swift Concert Event**

Thanks to the generosity of our supporters, Capital Caring Health was able to provide a one-of-a-kind experience at the Taylor Swift concert at FedExField on July 10 for some of the families in our grief support programs.



**Sailing for Hospice Care**

Capital Caring Health was honored to be one of the beneficiaries of the 2018 Hospice Cup sailing regatta On September 15 in Annapolis, Maryland.





*Raising Awareness: Capital Caring Health was featured on the WJLA-TV Seven on Your Side program in November 2018. WJLA produced segments about family caregivers and interviewed Carolyn Richar for a segment on National Family Caregiving Month. A group of employees also spoke with 100 callers – explaining hospice eligibility to those caring for loved ones.*



# Capital Caring Health in the News

WJLA-TV (ABC affiliate) graciously hosted a team of Capital Caring Health social workers, physicians and staff for a special **7 On Your Side** segment during the prime-time evening news to promote National Health Care Decision Day in April. During the two-hour segment, Capital Caring Health staffers manned a phone bank and fielded nearly 100 calls from viewers with questions regarding how to complete their advance care plans and the eligibility requirements for hospice care.

The response to this event was so popular that the Capital Caring Health team was invited to participate in a second **7 On Your Side** event in November for National Caregiving Month/National Hospice and Palliative Care Month. Once again, a team of social workers and grief counselors answered more than 100 calls from viewers interested in support and resources available for caregivers and of loved ones with an advanced illness.



## CAROLYN RICAR, CAPITAL CARING HEALTH'S CHIEF MISSION OFFICER, FEATURED IN ARLINGTON MAGAZINE

Arlington Magazine featured Capital Caring Health's Rev. Carolyn Richar, Chief Mission Officer of Capital Caring Health in its March/April issue discussing her role both as a nurse and chaplain. The article provided invaluable insight into the type of care Capital Caring Health provides to patients and their families at the end of life. Read the entire article here: <https://www.arlingtonmagazine.com/facing-death-part-job/>



## NEW WEBSITE LAUNCHED IN 2019

Capital Caring Health is inviting visitors to explore its new website, [www.capitalcaring.org](http://www.capitalcaring.org), which has been redesigned to provide a user-friendly experience with improved navigation and functionality. Visitors to the site now have access to updated content on common medical conditions that most frequently benefit from hospice care, with downloadable brochures on topics such as Caring for a Loved One with Dementia, and How to Care for Elderly Parents. Additional new features include a Caregiver Blog, videos showcasing our special inpatient facilities, comprehensive information on how hospice care is paid for and eligibility requirements, along with opportunities to volunteer and become part of the Capital Caregiver Community.

Visit [www.capitalcaring.org](http://www.capitalcaring.org) to check out the new resources for family caregivers, and take a look at our most popular resources for family caregivers.

**When is it Time for Hospice Care**  
<http://bit.ly/HospiceCaregiversGuide>

**I Think my Loved One Has Dementia**  
<http://bit.ly/DementiaCaregiversGuide>

**Caregiver's Guide – How to Talk to Your Parent's Doctor**  
<http://bit.ly/TalkToParentsDoctor>

**Caregiver's Guide – Taking Care of Elderly Parents**  
<http://bit.ly/TakingCareOfElderlyParents>

# 2018 Donors

## CIRCLE OF CARING *Monthly Donors*

Mr. Michael Ray Anderson  
Mr. and Mrs. Ruwan J. Arseculeratne  
Lt. Gen. Julius Becton, USA (Ret.)  
Mrs. Josephine D. Bennett  
Mr. and Mrs. Dennis M. Brogan  
Ms. Molly Brooks RN-BC, CHPN  
Ms. Irma Finn Brosseau  
Mr. Ray E. Broussard  
John Barclay Burns, Ph.D.  
Mr. and Mrs. Joseph J. Calabrese, III  
Mrs. Linda O. Carducci  
Mrs. Mary B. Cavanaugh  
Ms. Janel Clement  
Ms. Marie Collins  
Mr. and Mrs. Peter L. Conklin  
Ms. Deborah Corsi  
Lt. Cmdr. John L. Crapo, USN (Ret.) and Mrs. Catherine W. Crapo  
Ms. Linda R. Daley  
Ms. Janine A. Davidson  
Ms. Erika Davis  
Ms. Marianne A. DeHart  
Mr. Paul Del Giudice  
Mr. and Charles P. Delia Seltman  
Mr. Gabriel Derosier  
Ms. Sheila Dobiliauskas  
Ms. Karen Dolliver  
Mr. William Dozier  
Mrs. Claudia M. Dwyer-Lynch  
Mr. Lawrence Eldridge  
Mr. Brian C. Ellis  
Ms. Elisabeth Fopp  
Ms. Stephanie Forbes  
Mr. Hershell Foster  
Mr. John R. Frye and Ms. Cheryll P. Chew  
Ms. Amy Dilworth Gabel  
Mr. John M. Gatt, Sr.  
Ms. Christine Fisher and Mr. Oscar A. Goldfarb  
Mr. and Mrs. Eddie Gray  
Ms. Therese Guerette  
Ms. Alice Hayes  
Ms. Joan B. Hensley  
Mrs. Laura C. Hewitt  
Ms. Marylou Hobbs  
Ms. Tara O. Hoit  
Mrs. Janet P. Hugger  
Mr. Jared Benjamin Hughes  
Rabbi and Mrs. Brett R. Isserow  
Mr. Harold W. Jackson  
Ms. Eva Jenkins  
Ms. Margaret Jenny  
Ms. Doris Johnson  
Mrs. Patricia A. Johnston

Ms. Beverly Kilmer  
Col. Barbara P. King  
Ms. Karin Kirchoff  
Mr. and Mrs. Kirk Kloeppel  
Ms. Mary Kobane  
Mr. and Mrs. David A. Koplow  
Mr. Bruce Kost  
Mr. Jeffrey A. Kost  
Ms. Susan K. Kral  
Mr. Francisco A. Laguna  
Ms. Patrice LaHair  
Mrs. Natalie Latter  
Mr. Frederick C. Lee and Ms. Connie J. Reid  
Mrs. Cynthia R. Lilley  
Mr. Donald Lindquist  
Mr. and Mrs. Raymond L. Lum  
Mrs. Irene J. Manning  
Lt. Col. Barbara Estock Mays  
Ms. Julia R. McClung  
Ms. Catherine M. McCoy  
Ms. Dawn M. McGruder  
Mrs. Luz E. Meloy  
Mr. Seth Merritt  
Mr. Dick Messersmith  
Mr. and Mrs. Guy Philip Million  
His Excellency and Mrs. Dean A. Mosher  
Mrs. Gay Ojanpera  
Ms. Patricia C. Pappas  
Mr. and Mrs. David M. Payne, Sr.  
Ms. Veronica A. Perez  
Mr. and Mrs. Lawrence S. Peters  
Mr. Arthur R. Peyer  
Ms. Edwardene P. Pitcock  
Ms. Faye A. Powell  
Mrs. Hazel Rathbun  
Mr. and Mrs. William D. Read  
Mr. Robbin Roddewig  
Ms. Jennifer Rojas  
Mr. and Mrs. Roger P. Ross  
Mrs. Maria Rushing  
Ms. Leilani L. Sanders  
Ms. Beverly Schlotterbeck  
Ms. Awilda Sepulveda  
Ms. Sandra P. Shapiro  
Ms. Melinda Shoffner  
Mrs. Lillian H. Smith  
Mrs. Jane M. Starkey  
Mr. and Mrs. Robert S. Steven  
Ms. Sharon Stiefel  
Mr. Ronald D. Swenson  
Ms. Margaret M. Tocci  
Ms. Paula L. Todrin  
Ms. Robin A. Tomlin  
Mr. and Mrs. David Tordella  
Ms. Martha L. Trunk  
Mrs. Catherine Y. Turner

Col. Graham D. Vernon  
Mr. Albert Villanigro-Santiago  
Ms. Lauralie M. Wallace  
Mr. Frank L. Walski and Mrs. Deborah A. Hull-Walski  
Lt. Col. James G. Wilson, USA (Ret.) and Mrs. Pham Liem  
Mr. Robert E. Wilson  
Mrs. Sheryl D. Yates  
Ms. Patricia A. Young  
Ms. Susan E. Zolbe

## BEQUESTS \*

Estate of Vida M. Baugh  
Estate of George P. Bogumill  
Estate of Hugh Rose Brown  
Estate of Ann Donnelly Casey  
Estate of Michael F. Cieslak  
Estate of Katherine A. Dey  
Contance H. Grisard Revocable Trust  
John Wyatt Dupree Hall Supplemental Needs Trust  
Estate of Ann M. Hargrove  
Estate of Virginia Bierbrier Harris  
Estate of Kathleen Ann Jones  
Kelly Charitable Remainder Unitrust  
Felicia K. Klatt Trust  
Estate of Sandra E. Lamb

Rosa Bente Lee Trust  
Estate of Wayne L. O'Hern, Jr.  
Estate of Nancy Pater  
Estate of Emil H. Peront  
Estate of Joan T. Repasch  
Estate of Joan Van Metre  
Virginia L. Williams Revocable Trust

## HERITAGE SOCIETY *Individuals who have told us that Capital Caring Health is included in their will or estate plans, or in another type of planned gift.*

*On behalf of the future patients and families whose lives they will touch, we thank them for their thoughtful generosity.*  
Mrs. Mary M. Adams  
Mr. and Mrs. Len Adler  
Ms. Meryl N. Adler-Waak  
Mr. Howard Armfield  
Ms. Elfreda M. Baptist  
Mr. and Mrs. Elton W. Beasley  
Mr. and Mrs. Bruce L. Berlage, Sr.  
Ms. Judith Brocksmith  
Ms. Celeste Brodigan  
Mrs. Virginia H. Brown  
Mr. and Mrs. Christopher P. Bryant  
Ms. Christine Buckley-Currie  
Ms. Constance S. Cahill  
Mr. and Mrs. Len Campbell  
Ms. Elizabeth K. Cassidy  
Mr. Boris E. Cherney  
Ms. Ann C. Cole  
Darleen and Allan Cors  
Ms. Johanna M. Cox  
Mrs. Madeline G. Crytzer  
Mrs. Yoshiko Dart  
Mr. Gerard R. Dault  
Ms. Margaret S. Dozier  
Mrs. Sharron Dreyer  
Mr. and Mrs. David E. Feldman  
Ms. Linda Fields  
Mr. and Mrs. Paul S. Frommer  
Mrs. Helen E. Garden  
Mr. and Mrs. H. Lawrence Garrett, Jr.  
Mrs. Nancy J. Gormley  
Mr. John J. Gossage  
Mr. Marshall H. Groom, Sr.  
Mrs. Beate J. Guffee  
Mr. Charles M. Hicks  
Mr. and Mrs. Wayne K. Hill, Jr.  
Mrs. Doris H. Hinsey  
Mr. and Mrs. Russell A. Hitt  
Ms. Tara O. Hoit  
Mrs. Frances M. Holland  
Mr. and Mrs. Larry C. Hyden  
Ms. Alma M. Kasulaitis  
Mr. and Mrs. James P. Kelly  
Ms. Patricia G. Kenworthy

Mr. Jeffrey A. Kost  
Ms. Hallie M. Kugler  
Mrs. Theresa A. Lagueux  
Mr. Russell V. Lee  
Ms. Rebecca J. Lipp  
Mrs. Carol Lynch Pflug  
Ms. Vivian R. Lynn and Mr. David Heisler  
Ms. Elaine Marcuse  
Ms. Virginia A. McArthur  
Mr. and Mrs. Duane A. McKenna  
Mrs. Madeline M. McManaway  
Mr. Michael McNease  
Ms. Mary J. Mellon  
Mrs. Carol O. Minkin  
Mrs. Patricia Moore  
Mr. Alexander T. Morrow  
Mrs. Marion A. Moshos  
Mrs. Jane Nicholl  
Mr. and Mrs. Erroll V. Nicoll  
Mr. and Mrs. Daniel A. Nolan  
Ms. Alta M. Oben  
Ms. Julie Palais  
Mr. Martin Pearl  
Ms. Barbara Perry  
Mr. and Mrs. Scott C. Plein  
Ms. Judith A. Regner  
Ms. Harriette C. Rinaldi  
Mrs. Ingrid R. Rose  
Ms. Betty J. Rowen  
Mrs. Ina P. Schechter  
Mr. Franklin R. Scherf  
Capt. Jane E. Sharp, USNR (Ret.)  
Mrs. Wendy A. Shelley  
Ms. Kyle E. Skopic  
Mr. Anthony R. Spadaro  
Mrs. Betty J. Stacey  
Mr. and Mrs. George F. Steeg  
Ms. Krista J. Stewart  
Mr. LeRoy Stewart  
Mr. Steven L. Titlebaum  
Ms. Martha L. Trunk  
Mr. and Mrs. Gordon A. Tubbs  
Ms. Loretta Tulloch  
Ms. Kathy R. Van Kleeck  
Mr. Gary E. Waitschies  
Mrs. Dorothy M. Washko  
Ms. Carol J. Weber  
Mr. and Mrs. James L. Welch  
Ms. Marjorie E. White  
Mrs. June A. Williams  
Col. Walter A. Wood, III  
Mr. James K. Wright, Jr.  
Mrs. Jeanette L. Wurster  
Mrs. Sheryl D. Yates  
Ms. Patricia A. Young  
Dr. and Mrs. George R. Zug

## CHAMPIONS

*\$50,000 or more*

Anonymous  
Adams-Green Funeral Home, LLC  
Mr. and Mrs. Christopher J. Adams  
Clark-Winchcole Foundation  
Mr. and Mrs. Russell A. Hitt  
Washington Forrest Foundation  
Wise Hospice Options

## ADVOCATES

*\$25,000 - \$49,000*

Anonymous  
The Adler Foundation, Inc.  
Mr. and Mrs. Colin Atkins, Jr.  
Ms. Sally R. Bassler  
I. J. and Hilda M. Breeden Foundation  
Hamilton Insurance Agency  
The McCutchen Foundation  
Neal C. Nichols Foundation, Inc.  
Mrs. June D. Smith  
Washington Area Toyota Dealers

thanks to  
our generous  
donors



LEADERS

\$10,000 - \$24,999

Anonymous  
Everett and Carole Bergmann/Bergmann’s Cleansing Inc.  
Betty Evans Charitable Foundation  
Mr. and Mrs. Wesley G. Bush  
Campion Asset Management, LLC  
Capitol Seniors Housing  
Citrin Cooperman & Company LLP  
Congressional Federal Credit Union  
Direct Cremation Services of Virginia  
Mr. and Mrs. Stuart D. Engel  
Guernsey, Inc.  
Kelly Charitable Remainder Trust  
Loudoun County  
Mrs. Kathleen Lyons  
Magellan Healthcare  
Mr. and Mrs. William J. McGregor  
MVB Bank, Inc.  
Powhatan Nursing Home, Inc.  
Mr. and Mrs. Edward H. Rice  
Robert Trent Jones Charitable Foundation  
Sheehy Toyota of Fredericksburg  
Sheehy Toyota of Stafford  
Alfred T. Souder  
The Rice Family Foundation

United Bank  
VCU - Virginia Geriatric Education Center

PARTNERS

\$5,000 - \$9,999

Anonymous  
3M Foundation  
Mrs. Syndney E. Albrittain\*  
Mrs. Jodie Edith Allen  
Ms. Jyoti Amin  
Apple Federal Credit Union Foundation  
Clifford E. Barnes, Esq.  
BB&T  
Capital One  
Champion Title & Settlements  
Mr. and Mrs. Christopher Clemente  
Mr. Peter A. Converse and Mrs. Susan Yeloushan  
Ms. Kimberly A. Corbin  
Mr. Christopher K. Crockett  
Mr. Habib Edouard Debs  
Dentons US LLP  
Dittmar Company  
Dixon Hughes Goodman, LLP  
DonorsTrust  
Ms. Leslie Dunlap  
Dr. Amitai Etzioni and Dr. Pat Kellogg  
Ms. Virginia Geoffrey and Mr. John P. Andelin  
Mr. and Mrs. Grant T. Faubion

Dr. Jennifer Gerhard and The Rev. Dr. Kurt Gerhard  
Mr. David M. Graves  
Ms. Sheryl Hine  
Ms. Judy C. Holoviak  
Homecare.com  
Ms. Kay Homer  
Inova Health System  
IntelliWare Systems, Inc.  
Mr. and Mrs. Thomas E. Jordan  
Mr. and Mrs. David D. Kassir  
Mr. Robert D. Mansfield  
Mary and Daniel Loughran Foundation, Inc.  
Medline Industries Inc.  
Mrs. Dianne C. Minikes  
Mr. and Mrs. Bill Novelli  
Ms. Severine Petras  
Production Solutions, Inc.  
Ms. Susan M. Salek  
Mr. Anthony R. Spadaro  
Mr. Scott Stewart  
TEGNA Foundation  
The Mars Foundation  
Mrs. Nina Swan Touns  
WilBea Medical Equipment  
Wollenberg Foundation  
World Bank Community Connections Fund

ASSOCIATES

\$2,500 - \$4,999

Anonymous  
Mrs. Abigail Aguirre  
Mr. and Mrs. Bruce H. Alpert  
Amish By Designs  
Mr. S. Decker Anstrom and Ms. Sherron L. Anstrom  
Ms. Meredith Bailey  
Mrs. Darlene S. Baker  
Mrs. Roslyn Barry  
Bean Kinney & Korman, P.C.  
Mr. Carl E. Burke  
Ms. Kathleen B. Burke  
Dr. and Mrs. Michael Byas-Smith  
CareFirst BlueCross BlueShield  
Ms. Katrina D. Cherry  
ClubCorp  
Mrs. Annetta J. Coffelt  
Mr. Bob M. Coffelt  
Mrs. Judith Daniel  
DC Trails Inc. / Best Bus  
Mr. and Mrs. Eric M. Delman  
Mrs. Mary Dickinson Evans Sella  
Dimick Foundation  
Easterns Automotive Group  
Edwaldan Foundation  
Extreme Custom Collision  
Fairfax Memorial Funeral Home  
Fairfax Memorial Park

Falcons Landing Chapel Fund  
Fatty’s Taphouse  
Captain Charles D. Fellows, USN (Ret.) and Mrs. Alix M. Fellows  
Ms. Nancy J. Fouchs  
Maj. Gen. James E. Freeze, USA (Ret.)  
Mr. and Mrs. John M. Gilligan  
Glasgow Farms  
Ms. Cynthia Hartman  
Paul J. Hewgill Charitable Foundation, Inc.  
Ms. Vivian Hsia-Davis  
Jhoon Rhee Tae Kwon Do  
Mr. and Mrs. Ronald W. Jones  
Ms. Patricia G. Kenworthy  
Dr. Kathleen Fink and Dr. Matthew Kestenbaum  
Mr. Gregory M. Kohlhaas  
Mr. Amit Kulkarni  
Ms. Prue B. Larocca  
Mr. and Mrs. William R. LaVere  
Mrs. Joan S. Leonard  
Lifematters USA  
Mr. and Mrs. John F. Long  
Mr. and Mrs. David T. Lougee  
Dr. and Mrs. Gary Mather  
Mrs. Emmerika D. McArver  
Mr. Dan C. Meisinger  
The Miller & Chevalier Charitable Foundation  
Mr. Chris W. Milleson  
Dr. and Mrs. J. Cameron Muir  
Northern Virginia Shag Club  
Paycom

Ms. Lee Porter  
Mrs. Robin L. Portman and Mr. Thomas J. Portman  
Mr. and Mrs. Michael A. Preston  
Mr. David Prouty  
Mrs. Elizabeth B. Prouty  
Mr. Leo J. Radosta  
Mr. and Mrs. Dennis J. Reilly  
Mr. Chun W. Rhee  
Mrs. Theresa Rhee  
Mr. and Mrs. Daniel J. Riordan  
River Creek Country Club  
Mrs. Kathryn S. Rooney  
Roy Rogers Gang  
Sedona Taphouse  
Sibley Memorial Hospital  
Mr. and Mrs. William Overton Payne Snead, III  
Mr. and Mrs. Ronald Steele  
Mr. LeRoy Stewart  
Mrs. Lidia M. Teluk  
The Grace Curtis and Priscilla O’Hara Foundation  
The Kohlhaas Family Trust  
Mr. Michael Throne  
Mr. Larry W. Walker  
Ms. Kathryn A. Weiss  
Dr. and Mrs. John J. Whyte  
Mr. and Mrs. Rob Wise

FRIENDS

\$1,000 - \$2,499

Anonymous  
ACS Creative  
Adams Charitable Foundation  
Mrs. Mary M. Adams  
Shawn and Cynthia Adler  
AIG VALIC Retirement Services Company  
Air Force Officers’ Spouses’ Club  
Mr. and Mrs. John Weir Anderson  
Arlington Presbyterian Church of the Covenant Inc.  
Mrs. Greta Arnold  
Mr. and Mrs. Ruwan J. Arseculeratne  
Mr. and Mrs. John Arundel  
Levon Avdoyan, Ph.D.  
Dr. Lois LaMonica Bailey  
Mrs. Regina F. Bain  
Dr. Rosemary Balady and Dr. Gary Balady  
Bank of America Matching Gifts Fund  
Dr. William D. Barnard  
Ms. Nikki Batmanghelidj and Mr. Yagnesh Mehta  
Ms. Christina M. Bavetta  
Mr. and Mrs. Duane W. Beckhorn  
Lt. Gen. Julius Becton, USA (Ret.)  
Mr. and Mrs. Dennis P. Bedell  
Robert and Ruth Benker  
Mr. and Mrs. Ronald Bentley  
Ms. Nancy Bolish

Ms. Susan E. Boris  
Mrs. Mary Stowe Boyd  
Mr. Paul Brantum  
Mr. Fred J. Breaux  
Ms. Peggy C. Breeden  
Mr. John H. Broadbent, III  
Mrs. Virginia H. Brown  
Mr. and Mrs. Jerrold A. Browne, II  
Mr. Paul V. Byrne  
Ms. Lorni B. Capati and Mr. Michael A. Dillon  
The Carney Foundation  
Lt. Col. James N. Carpenter and Mrs. Bonnie Carpenter  
Roy and Elizabeth Carter  
Mrs. Emeline E. Castelli  
Mr. Mark Chandler  
Mrs. Yu Jung Chou  
Mr. and Mrs. Glen Chow  
Mr. and Mrs. Gregory J. Christman  
Mr. and Mrs. John M. Cibinic  
Mr. John B. Connor and Ms. Anne Richard  
Mr. John S. Cooke  
Mr. and Mrs. Robert L. Cursio, Jr.  
Mr. and Mrs. Robert daCosta  
Senator Thomas A. Daschle  
David & Lorna Gladstone Foundation  
Ms. Elizabeth Davis  
Mark and Bobbi Dickerson  
Mr. and Mrs. Thomas Donnelly  
Ms. Barbara A. Duckworth

Mrs. Claudia M. Dwyer-Lynch  
Ms. Nakia Eckley  
Mr. David H. Edwards  
Mr. Loren W. Epton, Jr.  
Mrs. Judith A. Erickson  
Mr. and Mrs. David L. Evans  
Mr. and Mrs. Garland E. Faist  
Mr. Daniel Fata  
Ms. Patricia V. Fettmann  
Mr. and Mrs. David B. Filippi  
Ms. Vera L. Finberg  
Mr. Stan Fink  
Mr. Bruce A. Finzen  
Mr. Jeffrey H. Fischer  
Ms. Jessica E. Fischer  
Mrs. Wendy C. Fischer  
Ms. Elisabeth Fopp  
Mr. Hershell Foster  
Mr. Lawrence R. Fouchs  
Friends at Boyd Caton Group, Inc.  
Mr. John R. Frye and Ms. Cheryll P. Chew  
Mrs. Margaret D. Galles and Mr. Steve T. Galles  
Mr. John M. Gatt, Sr.  
Mrs. Angie Kurtz Geary  
Ms. Mary C. Ginn  
Lorna J. Gladstone, Ph.D. and Mr. David Gladstone  
Ms. Elizabeth Q. Glennon  
Mrs. Julia C. Gluck  
Mr. Donald B. Gochnauer  
Mr. and Mrs. Pedro I. Goitia

Ms. Jacqueline V. Golden  
Ms. Michele E. Gonsalves  
Mr. and Mrs. Keith Good  
Mr. William Goodrum  
Mr. William H. Gordon  
Mr. Leo N. Graveline  
Mr. James L. Gray  
Ms. Mary-Alice Gray  
Mr. Curtis Greenway  
Mr. Marshall H. Groom, Sr.  
Ms. Therese Guerette  
Mr. and Mrs. Douglas D. Guernsey, Jr.  
Mr. Randy Guttman  
Ms. Anne M. Gwynn  
Hallmark Iron Works, Inc.  
Mr. John C. Hammond  
Mr. Ronald K. Harrell  
Mrs. Martha Caldwell Harris  
Ms. Margaret Hager Hart  
Ms. Eileen Hartin  
Col. Boyette S. Hasty  
Heart Sing Foundation  
Ms. Margaret L. Hively  
Ms. Edythe H. Hoffman\*  
Mr. Henry P. Hoffman  
Ms. Tara O. Hoit  
Mrs. Alejandra Holgado  
Mr. and Mrs. Alexander Holgado  
Mr. and Mrs. Michael P. Horne  
IBM Employee Services Center  
James M. and Virginia W. Newmyer Family Fund

FRIENDS

*continued*

Mr. Philip M. John  
Dr. Don R. Johnson  
The JV Schiro Zavela Foundation  
Ms. Alice Katz  
Mrs. Patricia M. Kaylin  
Mr. Ralph P. Kennedy  
Mr. Joseph Kerr  
Kettermans Jewelers  
Ms. Ingrid Keune  
Ms. Kristina E. Kibler  
The Kiplinger Foundation, Inc.  
Kiwanis Foundation of Arlington, Inc.  
Koll Family Foundation  
Mr. Jeffrey A. Kost  
Mr. and Mrs. William Kotapish  
Mrs. Mead A. Krim  
Mrs. Judith A. Lalley  
Ms. Susan B. Lancaster  
Mr. Bruce M. Laurich  
Mr. and Mrs. George Lawhorne  
Mr. Eric Lazerson  
Mr. Frederick C. Lee and Ms. Connie J. Reid  
LifeCare Medical Transports, Inc.  
Ms. Margaret S. Light  
Lockheed Martin Corporation  
Dr. and Mrs. David E. Longnecker  
Mr. and Mrs. Oliver Luck

Dr. Maureen Lyon and Mr. George Lyon  
Mr. Peter T. Lyttle  
Mrs. Ann Marie Mack  
Mr. and Mrs. David B. MacLean  
Capt. William B. Marsh, Jr., USN (Ret.)  
Martin Title and Settlement Services  
Mr. and Mrs. John C. Martin  
Mrs. Barbara Mathews  
Mrs. Agnes J. Mathias  
Mr. and Mrs. Clifford Mauck  
Col. James M. McAllan  
Mr. James M. McDonald  
Mr. Bill McDonough  
Mrs. Carolyn Z. McFarlane  
Mr. and Mrs. Bill J. McMenamin  
Mr. James P. Mehl, Jr.  
Dr. Robin B. Merlino  
Merrifield Community Association Foundation  
Mr. and Mrs. Norris E. Mitchell  
Ms. Barbara A. Monk  
Mrs. Patricia Moore  
Mr. and Mrs. Charles V. Moran  
Mr. and Mrs. Paul A. Morlacci  
Mullins & Thompson Funeral Service  
Dr. and Mrs. Michael C. Murphy  
Mr. Calvin Murray  
Ms. Diane Murray  
Mr. Ronald W. Musselwhite  
Mr. and Mrs. Paul C. Nassetta

Mr. and Mrs. Timothy J. Naughton  
Mrs. Virginia W. Newmyer  
Ms. Diane M. Norton  
Mr. Richard C. Ordeman  
Maurice and Mary Owens  
Bill Page Honda  
Ms. Kathleen Pessolano  
Mr. and Mrs. Lawrence S. Peters  
Mrs. Laura S. Petitt  
Mr. Kevin L. Polchow  
Mr. and Mrs. Thomas H. Porter  
Ambassador Phyllis M. Powers  
Mr. and Mrs. Tim Reed  
Mr. John Reinhard  
Mr. and Mrs. Christopher E. Reseigh  
Mr. Jay Ribler  
The Reverend Carolyn S. Richar and Mr. David Dieselhorst  
Mr. and Mrs. Christopher S. Rizek  
Mr. Todd C. Roberts  
Mr. James J. Robertson  
Ms. Virginia Robinson  
Mr. Richard L. Rosen  
Ms. Simone E. Ross  
Mr. Richard H. Rouck  
Dr. Richard E. Rubenstein, JD, PhD.  
Mr. Alan A. Rubin  
Mr. A. Derrick Russell  
Mr. Juan Sagastume  
SageGuild, LLC  
Mr. and Mrs. William A. Sawyer

Neil Schlusssel Family Foundation  
Mr. and Mrs. David A. Schwind  
Dr. and Mrs. George J. Seiler  
Mrs. Nancy L. Shands  
Capt. Jane E. Sharp, USNR (Ret.)  
Mr. and Mrs. Mark S. Silverwood  
Mr. and Mrs. John G. Slanta  
Mr. and Mrs. Robert J. Smith  
Ms. Martha P. Soper  
St. John’s Episcopal Church  
Ms. Susan M. Stuntz  
Mr. Eric A. Swank  
Irene E. Szopo, Esq.  
Mrs. Amy Titus  
Dr. Louise Toppin  
Mr. Donald Twombly  
Dr. Jane Takeuchi Udelson  
Uniwest Companies  
Mr. Matthys K. Van Schaik  
John C. Vance, M.D.  
Ellen Vargyas, Esq.  
Mr. Anthony E. Vellek  
Vulcan Materials Company Northern Concrete Division  
Mr. Frank L. Walski and Mrs. Deborah A. Hull-Walski  
Mrs. Ronni Ward  
Wawa Corporate Charities  
Ms. Corinne Weidenthal Smith  
Mr. Phillip Weimer  
Mr. and Mrs. John F. Welch  
Ms. Jade C. West and Mr. Raymond J. Lajeunesse, Jr.

Mr. and Mrs. Thomas H. White  
Mr. and Mrs. Corbin M. Wilkes  
Ms. Anna B. Williams  
The Wilner Family Foundation  
Mr. Michael P. Wilson  
Mr. and Mrs. Frederick B. Wirth  
Mrs. Anne S. Wohlford  
Woman’s Club of McLean (GFWC)  
Ms. Nancy A. Woolever  
Ms. Kathryn Ann Yeager  
Ms. Kelly S. Young  
Ms. Patricia A. Young  
Mrs. Terry T. Young  
Mr. Vance S. Zavela and Mrs. Jean L. Schiro-Zavela  
Ms. Shirley M. Zeliff  
Mr. and Mrs. Jeffrey A. Zinn

NEIGHBORS

*\$250 - \$999*

Anonymous  
Mr. and Mrs. Ernest Ackermann  
Mr. Donald B. Adams and Ms. Ellen Maland  
Mr. and Mrs. Kenneth L. Adams  
Ms. Alison Kaufman and Mr. Robert Adcock  
Ms. Meryl N. Adler-Waak  
Mr. Greg Albright  
Ms. Kathleen Alcott  
Mr. Cupid Alexander  
Ms. Sandra S. Alexander  
Mrs. Katharine G. Alleman

Ms. Tanja Allen  
Mr. and Mrs. Joseph S. Amado  
American Endowment Foundation  
America’s Choice Mortgage Co  
Amica Mutual Insurance Co.  
Mr. Michael Ray Anderson  
Mrs. Sue A. Anderson  
Ms. Vickie C. Andreae  
Ms. Darryl A. Andres  
Ms. Carmen G. Aponte  
Mr. Daniel Arch  
Ms. Marion G. Arkin  
Mr. James Ashurst  
Mr. Michael G. Atienza  
Ms. Pamela S. Atkins  
Jan and Irwin Auerbach  
Mr. Edward A. Ayscue  
Mr. Gary Bacher  
Mr. Tom B. Bain  
Col. James K. Baisden, USAF (Ret.)  
Mr. and Ms. Jeffrey Baker  
BallstonGives  
Mr. Robert J. Banco  
Ms. Edwina A. Barbee  
Mr. John L. Bardwell, III  
Mr. John D. Barlow  
Mr. John D. E. Barnett  
Dr. Mary B. Barton  
Ms. Amy Bass  
Mr. Joel Bassam  
Mr. and Mrs. Robert J. Batal  
Mr. James C. Beachell

Mrs. Jessie Beals  
Mr. and Mrs. Richard G. Bean  
Mrs. Marion I. Beavers  
Mrs. Vivienne Becchetti  
Mr. David H. Beck  
Mr. I. Dean Beebe, Jr.  
Ms. Lisa L. Bellamy  
Ms. Linda B. Bender  
Mrs. Margaret Bender  
Benedictine Sisters of Virginia  
Ms. Michelle Berberet and Mr. Bill Maher  
Mr. Thomas Berg  
Mr. Gordon J. Bernhardt  
Mr. Richard A. Bernstein  
Mr. David C. Berry  
Cmdr. Loren W. Biegler, USN (Ret.) and Mrs. Donna J. Biegler  
Mr. William F. Billard  
Mr. and Mrs. Jerry Birchmore  
Ms. Susan K. Bird  
Mr. Robert M. Blansfield  
Mrs. Linda B. Bollon  
Mr. James W. Borches  
Ms. Donna Coombs Macpherson and Mr. Thomas F. Boudreau, Jr.  
Ms. Jennifer L. Bowling  
Mr. and Mrs. William Boyan  
Mrs. Anna M. Boyd  
Colonel Ernest Boyle, USA (Ret.)  
Ms. Estella D. Bradfield  
Mr. P. James Brady, III  
Ms. Kimberly Brancato  
Ms. Elaine Braverman

Ms. Dawn Breakiron  
Ms. Penelope Breese and Mr. Stevenson McIlvaine  
Dr. Vicki A. Brehman and Dr. Joel A. Brehman  
Ms. Judith M. Brewer  
Ms. Christina Bridgeport  
Mr. David W. Briggs  
Ms. H. Joyce Briley  
Ms. Jane E. Brill  
Ms. Judith Brocksmith  
Christopher C. Broder, Ph.D.  
Mr. and Mrs. Dennis M. Brogan  
Mr. George F. Brookings  
Ms. Joyce Brooks  
Ms. Molly Brooks RN-BC, CHPN  
Mr. and Mrs. Douglas A. Brothers  
Mr. Ray E. Broussard  
Mr. and Mrs. Vincent Brown  
Mr. and Mrs. Blair D. Brown  
Mr. William A. Brown  
Ms. Jeanne M. Broyhill  
Mrs. Jacqueline E. Broz  
Mr. Paul Broz  
Mr. Guido J. Brunetti  
Mr. Ted Buckley  
Ms. Cynthia L. Burgess  
Burke & Herbert Bank  
John Barclay Burns, Ph.D.  
Mr. Wayne F. Burt  
Mr. and Mrs. John A. Bushnell  
Capt. C. Joseph Bustamante and Mrs. Sally A. Bustamante  
Mr. Martin Butler

Mr. Thomas J. Byrnes  
Ms. Jeanne S. Cahoon  
Mr. and Mrs. Joseph J. Calabrese, III  
Mrs. Amy L. Calligan  
Mrs. Rae Camin  
Mr. and Mrs. Len Campbell  
Mr. and Mrs. Scott D. Cannon  
Canton-Potsdam Hospital Medical Staff  
Care with LOVE LLC  
Mr. Carson V. Carlisle, Jr.  
Mr. and Mrs. John D. Carman  
Mr. Eric J. Carpenter  
Ms. Barbara L. Carr  
Mr. and Mrs. James O. Carson  
Mr. Jeffrey C. Carter  
Mr. and Mrs. William Carter, Jr.  
Ms. Judy Case  
Mrs. Ellizabeth M. Castro  
Mrs. Mary B. Cavanaugh  
Mr. and Mrs. Brian J. Chappelle  
Ms. Joyce M. Cherry  
Adm. Henry G. Chiles, Jr., USN (Ret.)  
Ms. Donna M. Christian  
Mr. and Mrs. Thomas E. Ciciarelli  
Mr. and Mrs. David Clark  
Mr. and Mrs. Matthew J. Clark  
Lt. Col. Roy C. Clark, Jr., USA (Ret.)  
Mr. Stephen D. Clark  
Ms. Tameta R. Clark  
ClearCare Dental

Dr. and Mrs. Mark A. Clodfelter  
Elizabeth L. Cobbs, M.D. and Philip D. Green, Esq.  
Mrs. Mary Beth Cockerham  
Mr. Wallace E. Cockrell  
Ms. Mary Ann B. Coffland  
Dr. Linda Lee Cohen  
Ms. Ann C. Cole  
Mr. and Mrs. Thomas J. Collins, III  
Colonial Funeral Home of Leesburg  
Mr. Edward L. Colvin  
Mrs. Teresa Combs  
Mr. Thomas R. Comi  
Mrs. Donna May Comstock  
Ms. Faustine Comstock  
Ms. Ann C. Connell  
Mrs. Jan B. Conniff  
Mr. and Mrs. Ray Converse  
Ms. Nancy Cook  
Mr. and Mrs. Ralph J. Cook  
Ms. Deborah Corsi  
Lt. Col. Daniel B. Corts  
Ms. Carolyn F. Corwin  
Mr. Graham A. Cosmas  
Mrs. Melissa Daniel Coyle  
Lt. Cmdr. John L. Crapo, USN (Ret.) and Mrs. Catherine W. Crapo  
Mr. Timothy J. Crotty  
Mrs. Mary Kay Crow  
Mrs. Nancy Crowley  
Mr. Charlie M. Crummett, Sr.  
Mr. and Mrs. Dan D’Agostino, Jr.



NEIGHBORS

*continued*

Mrs. Catharina H. D’Alberto  
Mr. and Mrs. Christopher Dalrymple  
Mr. Phillip L. Dalton  
Mrs. Nancy Dannels  
Dr. Peter A. Danton  
Mrs. Katherine A. Danyliw  
Ms. Barbara D. Davis  
Ms. Erika Davis  
Mrs. Mary Jo Davis  
Mr. and Mrs. Simon De Groot  
Ms. Jennifer Debrow  
Defense Logistics Agency  
Mr. and Mrs. Pierce E. DeGross III  
Mr. Paul Del Giudice  
Mrs. Carol A. Delany  
Mr. and Mrs. David J. Delia  
Capt. Theodore E. Deming  
Ms. Cynthia Derby  
Mrs. Louise S. Desilets and Mr. Paul A. Desilets  
Mr. and Mrs. Stephen Devonshire  
Ms. Christine H. DeYoung  
Mrs. Roger W. Diehl  
Mr. and Mrs. Robert H. Dilworth  
Mr. and Mrs. Donald B. Dinger  
Ms. Jennifer K. Dixon  
Danielle Doberman, M.D.  
Ms. Sheila Dobiliauskas  
Mr. and Mrs. Stanley C. Dobson

Mr. William J. Dobson  
Mr. and Mrs. David Doetschman  
Mrs. Lois E. Dokken  
Mr. Lorene D. Dow  
Mrs. Mary F. Downey  
Mr. and Mrs. Steve duBois  
Mrs. Mary Jane Dubuc  
Mrs. Rebecca D. Duckworth  
Mrs. Patricia Duffy  
Ms. Janet W. Duke  
Mr. and Mrs. John C. Dulan  
Mr. Joseph Dunn  
Mr. Rick Dunn  
Sandy and Jim Dunn  
Dupont Circle Village  
Fran H. DuRocher, MD and Siggie Moser, RN  
Eastminster Presbyterian Church  
The Ed and Andy Smith Fund  
Edelman Financial Services  
Mr. William Edington  
Elks Auxiliary Arlington-Fairfax Lodge # 2188  
Ellie’s Elves  
Ms. Mary Ann Elliott  
Mr. Brian C. Ellis  
WC Enmon  
Ms. Diana Erbsen  
Mr. Milton H. Ericksen  
Ms. Mary E. Esslinger  
Evangelical Lutheran Church of the Redeemer  
Mr. Keith Everett

Ms. Megan E. Faherty  
Ms. Patricia Fairfield  
Mr. Brett Faubion  
Federated Lighting, Inc.  
Ms. Beth Feldman  
Ms. Nancy Fenstermacher  
Mr. Andrew Ferguson  
Fine Creek Brewing Company  
Mr. Norm J. Finkel  
First Adult & Pediatric Health Care  
First Colonies Anesthesia Associates  
Mr. Mark Fischer  
Mrs. Bethany G. Fisher  
Ms. Susan E. Fisher  
Ms. Cecilia M. Fiske  
Mr. and Mrs. Forrest H. Fleming  
Mr. J. Roger Fleming  
Ms. Mary L. Fox  
Ms. Brenda J. Franklin  
Mr. G. P. Michael Freeman  
Mr. Keith Freeman  
Dr. Robert J. Freishtat  
Mr. John C. French, Jr.  
Mr. Carl A. Fretts  
Mr. Bryce A. Frey  
Ms. Linda K. Friedman  
Mr. Dennis Friel  
Mrs. Charlotte K. Friend  
Mrs. Lindalou Friesen  
Mr. Cary C. Fuller  
Mr. and Mrs. Charles M. Fulton  
Ms. Amy Dilworth Gabel

Ms. Susan Gage  
Lt. Col. and Mrs. Charles K. Gailey, III  
Ms. Doris M. Gallagher  
Ms. Marie E. Gallagher  
Mr. Charles R. Gallaway  
Ms. Leticia Gallegos  
Mr. Richard J. Galus  
Ms. Karen M. Galuska  
Mr. and Mrs. Edward V. Garlich, Jr.  
Ms. Altonia Garrett  
Ms. Delores Garvin  
Ms. Donna M. Gatewood  
Mr. Martin Gellert  
Ms. Angela George  
Ms. Yanick Georges  
Ms. Melinda Gessel  
Ms. Mary A. Giarda  
Mrs. Barbara G. Gibson  
Ms. Elsa Gigante  
Mr. and Mrs. Peter M. Gill  
Mr. and Mrs. Rajon T. Gilmore  
Lt. Col. Mark J. Gingras  
Ms. Elizabeth N. Giuliani  
Global Education Initiative Inc  
Glory Days, Inc  
Mr. Tony Goad  
Ms. Marguerite F. Godbold  
Mr. Alex Gold  
Dr. and Mrs. Alan Goldblatt  
Mrs. Helen Golden  
Mr. James D. Golden  
Ms. Jill Golden

Ms. Christine Fisher and Mr. Oscar A. Goldfarb  
Ms. Katherine M. Gomm  
Mr. Fraser A. Goode and Ms. Barbara J. Christman  
Ms. Constance M. Goodman  
Mrs. Rosann M. Goodrich  
Mrs. Mary T. Goodwin  
Mr. Michael W. Gorham  
Dr. and Mrs. John M. Gormally  
Ms. Emily Jo Goulden  
Mr. Willford S. J. Gourdine  
Mr. Srinath Jay Govindan  
Mr. Adam Gray  
Mr. Broderick Green  
Greenbelt Community Church  
Mrs. Yen Greenfield  
Mr. Alan R. Gregory  
Mrs. Paula A. Griffeth  
Mr. Allan Griffith  
Mr. Aaron R. Grimm  
Mr. and Mrs. Austin E. Grisham, Jr.  
Ms. Kimberly Grove  
Mr. Stephen M. Grove  
Mrs. Sally M. Guilfoyle  
Gunston Baptist Church  
Ms. Jane W. Gwinn  
Mr. James P. Hagan  
Ms. Wendy Hahn  
Ms. Jennifer Hale  
Mr. and Mrs. Efren P. Halili  
Ms. Janet Hall  
Ms. Kathy V. Hamor

Ms. Karen M. Hanchett  
Ms. Joan E. Handler  
Mr. Dennis Hanlon  
Mrs. Joyce L. Hanson  
Ms. Susan Hargreaves  
Mrs. Helen M. Harkins  
Mr. Ben Harris  
Mr. and Mrs. Alden S. Hart, Jr.  
Mr. and Mrs. Robert P. Harvey  
Mrs. Nellie Hashemi  
Ms. Christina Haskins  
Gen. and Mrs. Henry J. Hatch  
Alan B. Hausman, Esq.  
Ms. Doris Hausser  
Ms. Jean Hawes  
Mr. Ronald D. Hawkins  
Mr. and Mrs. John T. Hazel, Jr.  
Ms. Barbara W. Hazelett  
Mr. and Mrs. Keith B. Ritter  
Mr. James W. Heegeman  
Ms. Carol E. Heim and Mr. Philip Carter  
Mrs. Donna S. Heinz  
Lydia C. Heinzman \*  
Ms. Carol Henderson  
Ms. Mildred M. Henderson  
Mr. Donald J. Hennessey  
Mr. and Mrs. Donald B. Henretty  
Ms. Joan B. Hensley  
The Herb Block Foundation  
Mrs. Ellen A. Herbert  
Mrs. Janice B. Hernandez  
Mr. and Mrs. Jack Herold

Mr. Todd Hetherington  
Ms. Anne Hines  
Mr. and Mrs. James V. Hirsch  
Ms. Anne Hirshfield  
Mrs. Linda Hitchcock  
Mr. Lewis J. Hixson  
Ms. Marylou Hobbs  
Mr. and Mrs. Stephen Hodson  
Mrs. Karen Z. Hoffman  
Ms. Lee McGraw Hoffman  
Mrs. Susan S. Hoffman  
Mr. Louis M. Hofheimer  
Mrs. Katherine S. Hogle  
Mr. Stephen L. Hogle  
Mrs. Kathryn B. Hokenson  
Ms. Marianne H. Holmes  
Ms. Janet L. Holton and Mr. Philip Haber  
Mr. and Mrs. Gerald Holtz  
Mr. Sheldon K. Hooper  
Mr. Cary P. Hoover  
Mr. William B. Hopke, Jr.  
Ms. Prudence Hopkins  
Mrs. June Horowitz  
Horton’s Wrecker Service, Inc.  
Mr. and Mrs. Arthur E. House  
Ms. Laurine D. Houston  
Mr. and Mrs. David P. Hoyer  
Mr. David M. Hudson  
Mr. and Mrs. Michael S. Hudson  
Mr. and Mrs. Duane F. Hufford  
Mrs. Janet P. Hugger  
Mr. Edward W. Hughes

Ms. Eileen Hughes  
Mr. Timothy R. Hughes  
Mr. and Mrs. Robert D. Hunt  
Mr. Richard G. Hurlburt  
Mr. and Mrs. Fredrick G. Hutchison, Jr.  
Idylwood Presbyterian Church  
ImpactAssets  
Mr. Anthony F. Ingrassia  
Ms. Anne P. Inman  
Mr. Roy Y. Irvin  
Mr. and Mrs. William Irwin  
Mr. William Irwin  
Mrs. Loretta F. Isaak  
Mr. Harold W. Jackson  
Mr. James J. Jackson  
Mr. and Mrs. Mark T. Jacobson  
Mrs. Mary Ellen James  
Ms. Donna L. Jamison  
Mr. John Jamison  
Mr. Gabriel David Javier  
Ms. Audrey Anne Jaworski  
Mrs. Gertrude Katherine Jeannin  
Ms. Khama A. Jeffrey  
Mrs. Monica Jenkins  
Mr. and Mrs. William R. Jenkins, Jr.  
Mr. Craig S. Jennings and Mrs. Heather Jennings  
Ms. Margaret Jenny  
Jerome A. & Deena L. Kaplan Family Foundation  
Mr. Wayne G. Johns  
Mr. Mark A. Johnson

Mr. Martin Johnson  
Ms. Elliott Jones  
Mr. Randy Jones  
Mrs. Kathleen Jourdan  
Mrs. Arlean S. Juhasz  
Mr. Richard A. Kahane  
Ms. Melissa N. Kalner  
Mr. and Mrs. Jerome A. Kaplan  
Mr. and Mrs. Mark L. Kaplan  
Ms. Joan E. Kasprowicz  
Ms. Alma M. Kasulaitis  
Mr. Mohammad Kaymanesh  
Dr. Alexandra M. Kazakis  
Ms. Kathryn C. Kearns  
Mr. William J. Keery  
Mr. Donald R. Kehoe  
Mr. and Mrs. Richard J. Kelly  
Kendra Scott LLC  
Mr. Paul E. Kenison  
Mr. John J. Kenny  
Mr. Michael L. Kerley  
Dr. Farida E. Khan and Dr. Ramesh Singh  
Mr. Michael Kim  
Mr. and Mrs. James F. Kimberly  
Ms. Janet E. King  
Mr. and Mrs. Michael J. King  
Ms. Karin Kirchoff  
Ms. Michele Kirk  
Mr. George C. Knapp  
Knights of Columbus - Ambrose Council #8403  
Mr. and Mrs. Lester B. Knutsen

Ms. Mary Kobane  
Mrs. Alice S. Konze  
Mr. and Mrs. David A. Koplow  
Mr. John Koutsoumpas  
Mrs. Patricia Kuczkowski  
Mr. James W. La Baugh  
Lake Investment Associates, LLC  
Mr. Amit Lall  
Mr. Frank LaMonica  
Mr. Kevin L. Landes  
Ms. Jane Lang  
Mr. James E. Langmesser  
Mrs. Diane S. Large  
Ms. Pamela Clapp Larmee  
Maj. Gen. Robert H. Latiff, USAF (Ret.) and Mrs. Latiff  
Mr. and Mrs. Daniel M. Lawn  
Mr. and Mrs. David A. Lawrence  
Col. Robert E. Ledford, USAF (Ret.) and Mrs. Patricia K. Ledford  
Ms. Judith H. Leep  
Mrs. Beverly M. Lempicki  
Ms. Nora Y. Leng  
Mrs. Leslie Lenny  
Mr. and Mrs. David Lepe  
Dr. Stephen M. Levin  
Ms. Joann Lewinsohn  
Mr. John A. Lewis  
Dr. and Mrs. Randall J. Lewis  
Mr. Daniel C. Link, Jr.  
Mr. and Mrs. David Liss  
Ms. Angela M. Lo Re

NEIGHBORS

*continued*

Mr. Peter Lo	Mr. and Mrs. Ali Marashi	Mrs. Madeline M. McManaway	Mr. Alexander T. Morrow	Ms. Ann E. O’Neil	Ms. Ane Powers	Mr. Edgar L. Robinson	Mr. and Mrs. Tom O. Sachs	Ms. Joan E. Shepherd	Mr. Louis E. Spector
Ms. Kairi Lofton	Marjorie D. Buynak Fund	Mr. and Mrs. Joseph F. McMurrer	Mr. and Mrs. Michael Mosko	Mrs. Eileen J. O’Neill	Mr. Christopher A. Poythress	Mr. Edward M. Robinson	Ms. Lucy Sale	Mary J. Sherman	Mr. Robert F. Spillane
Capt. David A. Long	Ms. Virginia C. Mars	Mrs. Regan McNair	Mr. Nigel Mote	Ms. Barbara Feibelman and Mr. Ken Orenstein	Capt. John H. Preisel, Jr. and Mrs. Marybeth M. Preisel	Ms. Kirsten J. Robinson and Mr. John Schectman	Ms. Bettie L. Samuel	Ms. Sally R. Sherman	Ms. Frances E. Spina
Mr. and Mrs. Len Lopez	Mrs. Reisha Martin	Mr. and Ms. John M. McNally	Dr. and Mrs. Angus Muir	Ms. Kathryn S. O’Toole	Prestige Healthcare Resources, Inc.	Mr. and Mrs. Thomas H. Robinson, USCG	Mrs. M. J. Santley	Ms. Anne Marie Sherwood	Mr. L. Bradley Stanford
Mr. Oscar Lorenzo	Ms. Stephanie Martin	Mrs. Marjorie E. McNare	Capt. and Mrs. Michael L. Mulford	Mr. and Mrs. Larry E. Otto	Mr. Daniel J. Price	Mr. William Q. Robinson	Ms. Carol E. Saunders	Mr. Michael Shinsky	Mrs. Jane M. Starkey
Mr. and Mrs. Keith C. Loughery	Ms. Maria E. Martinto	Mr. Allen K. Mears	Ms. Kathleen M. Mullaney, DDS, FAGD	Mr. Thomas A. Owens	Mr. Charles R. Privitera, M.D. and Mrs. Linda M. Privitera	Dr. Ann Rochmis and Dr. Paul G. Rochmis	Mrs. Carole J. Savage	Mrs. D. Michele Cote Shomaker	Mr. and Mrs. George F. Steeg
Mrs. Mary W. Lucius	Mrs. Maryanne Martonik	Ms. Kirsten Medhurst	Colonel Antonio Munera, III and Mrs. Barbara Munera	Mr. George P. Pakidis	Lt. and Mrs. Dennis Pryor	Mr. and Mrs. Dan Rochon	Mr. and Mrs. Peter A. Scala	Ms. Callie E. Shosho	Mr. and Mrs. James A. Stenson, Jr.
Mrs. Marie Ruth Lukac	Ms. Deborah Masek	Mrs. Jean Meek	Mr. Terence S. Murphy	Mrs. Betty B. Parker	Mr. Ronald L. Pryor, Jr.	Mr. Robbin Roddewig	Mrs. Andrea Scamardo	Mr. and Mrs. Ivor Silver	Ms. Sara Stern
Mr. and Mrs. Raymond L. Lum	Mrs. Esther B. Mast	Mr. Douglas Scott Merrell	Ms. Janan Musa	Mr. Donald K. Parsons	Mr. and Mrs. Bruce Pujanauski	Mr. and Mrs. A. D. Rodgers, III	Mr. and Mrs. Thomas S. Scarano	Mr. and Mrs. Calvert Simmons	Mrs. Cheryl Stewart Lushe
Mr. and Mrs. Robert R. Lund	Ms. Christina Maxson	Ms. Robin K. Mertes	Mr. and Mrs. Elijah L. Musick	Mrs. Mary Beth Parsons	Questel Orbit	Ms. Rosanne L. Rodilosso	Ms. Elizabeth Scheiman	Mrs. Ronda J. Simms	Ms. Sharon Stiefel
Mr. and Mrs. Kevin Lutgen	Ms. Judith L. Mayrose	Mr. Philip L. Metzler	Mr. and Mrs. Jim M. Myers	Mr. and Mrs. David M. Payne, Sr.	Mr. Michael J. Quigley	Mr. Robert A. Rodriguez	Mrs. Irmgard B. Scherer	Mr. Daniel Simons	Mr. James A. Storey
Mr. and Mrs. George P. Lutz	Lt. Col. Barbara Estock Mays	Mr. and Mrs. John Miklos	Mr. Arnold Nachmanoff	Dr. and Mrs. David Peereboom	Mr. Thomas J. Raburn	Ms. Clara Rodriguis	Mr. John L. Scherer	Mrs. Sonya Singer Livingston	Mr. Donald W. Stover
Mr. and Mrs. Theodore C. Lutz	Mr. and Mrs. John F. Mazzuchi	Mr. Allen Z. Miller	Mr. Edward Nanas	Mr. and Mrs. Paul E. Pellman	Mr. and Mrs. John C. Racich	Mr. and Mrs. John Rohland	Ms. Frances P. Schlemmer	Mrs. Helene V. Sirpis	Mr. Robert G. Stowbridge
Mrs. Lucinda J. Lynard	Mrs. Marcia Stone McAllister	Mr. Gerald O. Miller	Mrs. Anu Narula	Mr. and Mrs. Alan Pendleton	Mr. and Mrs. John C. Rahming	Mrs. Sherrand L. Romyn	Ms. Beverly Schlotterbeck	Mr. and Mrs. William P. Skinner	Ms. Catherine (Kay) B. Stowers
Mr. and Mrs. John Lynch	Mr. and Mrs. James A. McAskill	Mr. John Tyson Miller	Mr. Mark Nasser	Mr. Herman L. Penner	Mrs. Hazel Rathbun	Mrs. Michelle Roscelli	Mr. Craig Schmitz	Ms. Christine Skitol	Mrs. H. Frances Stringfellow
Mr. and Mrs. Scott Lyons	Ms. Lisa M. McBride	Mr. and Mrs. Guy Philip Million	Ms. Martha A. Newman	Ms. Veronica A. Perez	Ready Hands Home Care	Mr. Floyd Rose	Mrs. Clarine Schmukler	Mr. and Mrs. Richard Slider	Mrs. Martha J. Strominger
Mrs. Sally R. Lyver	Mrs. Laura E. McCloud	Ms. Minetta Minor	NGEN LLC	Ms. Barbara Perry	Mr. Patrick A. Reale	Mr. and Mrs. David C. Roseman	Ms. Susan E. Schruth	Ms. Marianne Sloan	Mrs. Mary Sullivan
Ms. Roberta MacDonald	Ms. Julia R. McClung	Ms. Kimberly Mitchell	Ms. Megan L. Nicolson	Mrs. Ruth H. Perry	Mr. and Mrs. William J. Redlin	Dr. Faye Rosenbaum	Mr. David Schuster	Mr. Richard J. Sloan	Mrs. Sue A. Sutherland
Mr. and Mrs. Kerry H. Mack	Ms. Catherine M. McCoy	The MITRE Corp.	David Nocar	Maj. W.G. Peters, USMC (Ret.)	Ms. Shirley Reece	Kathleen E. Kunzer, Esq. and Paul S. Rosenzweig, Esq.	Ms. Gretchen A. Schuster	Ms. Deborah R. G. Smith	Mr. Robert Swanson
Mr. and Mrs. Ian A. MacKay	Ms. Melissa McDaniel	Mr. Mark G. Moffatt	Dr. Judith A. Nowak	Mr. Ronald L. Peverill	ReedSmith	Mr. and Mrs. Roger P. Ross	Mr. and Mrs. Andrew M. Schwind	Mr. George Smith	Mr. Alfred D. Swersky
Mr. and Mrs. Alan F. Mager	Mr. and Mrs. Michael J. McElderry	Mr. J. Scott Monier and Ms. Jerrilynn Pudschun	Ms. Alison Nudd	Ms. Meredith Piemme	Ms. Diana L. Reilly	Roth Staffing Companies, L.P.	Dr. Dorothy E. Scott, M.D.	Mr. John S. Smith RN, BSN	Ms. Mary Elizabeth Swope
Mr. Doug Magruder	Mr. and Mrs. Norwood R. McElveen, Jr.	Ms. Ann E. Monnig	Robert A. Nussbaum, M.D.	Ms. Alana Pilkington	Ms. Christine Reimers	Dr. James A. Roth	Tins Scott	Ms. Joyce Smith	T & S Brass and Bronze Works, Inc.
Ms. Mary M. Mahon	Mr. David McFarland	Mr. Kevin P. Montgomery	Ms. Michelle Nyarko	Mr. Joe Pimenta	Ms. Katherine M. Reiter	Mr. Mark N. Roth	Ms. Ann H. Scully	Ms. Kathleen Aurora Smith	Ms. Majgan Talasazan
Ms. Gretchen S. Major	Mr. and Mrs. Paul J. McFarland	Mrs. Linda C. Moore	Ms. Alta M. Oben	Mr. and Mrs. Robert Pittman	The Reynolds Team	Mrs. Candace D. Rush	Ms. Lee Alice Kimball and Mr. Richard T. Scully	Mrs. Lillian H. Smith	Tampa Orlando Pinellas Jewish Foundation Inc.
Ms. Joy Mallick	Mr. Gregory M. McFerron	Mr. James A. Moors	Ms. Karen L. Oberst	Platinum Group Real Estate	Ms. Jean J. Rickard	Mrs. Maria Rushing	Sentara Healthcare	Mrs. Mary Elen T. Smith	Mr. Lance Tennyson
Mr. and Mrs. Joseph A. Malpeli	Ms. Dawn M. McGruder	Moran Family Charitable Fund	Mr. and Mrs. John O’Donnell	Ms. Ruby Poiriel	Mrs. Carolyn A. Rieth	Mr. David H. Russell	Mr. Norman W. Severin	Ms. Maureen P. Smith	Terrasimco, Inc.
Manassas Presbyterian Church	Mr. Terence J. McGurn	Mr. Arthur Moretti	Mr. John Frederick O’Donnell	Mr. Coleman C. Porter	Right at Home Northern Virginia	Ms. Margaret L. Ryan	Shaw’s Carpets, Inc.	Mr. Stephen M. Smith	Mr. and Mrs. David A. Thibodeau
Mr. Robert Maniuszko	Mr. Emell McKelvey	Robert and Sandra Morofsky	Ms. Amy Hammond O’Dwyer	Mrs. Susan L. Porter	Mrs. Jacquelyn M. Rizzo	Mrs. Ellen D. Rydell	Mr. and Mrs. Richard S. W. Shepard	Ms. Dana Snyder	Mr. Jay N. Thierry and Ms. Sandra D. Thierry
Mr. Robert G. Mann	Ms. Sandy R. McKenzie	Mr. and Mrs. Adrian Morris	Mrs. Gay Ojanpera	Posner-Wallace Foundation	Ms. Julia Robbins	Ms. Jenny Saad	Ms. Diana Shepherd	Mr. Christopher N. Sonnesyn	Mrs. Sandra Lea Thigpen
Mrs. Irene J. Manning	Mr. William J. McLaughlin	Jean A. Morrison and Greg Knott	Ms. Marilyn C. Olson	Mr. and Mrs. Jason Potter	Mr. Sam H. Roberson			Mr. and Mrs. Charles D. Sorenson, II	
	Mr. Robert M. McLeran		Ms. Sandra J. Olson	Ms. Faye A. Powell					

*\*Deceased*



NEIGHBORS

*continued*

Mr. James Thomas  
Mr. and Mrs. Richard E. Thompson  
Mr. Homer Thrall, Jr.  
Mr. and Mrs. Nathan E. Tielking  
Ms. Carol J. Tienken  
Mr. and Mrs. David J. Tinsley  
Ms. Margaret M. Tocci  
Ms. Robin A. Tomlin  
Mr. and Mrs. David Tordella  
Mr. Ronald L. Torezan  
Mrs. Wilhelmenia G. Torian  
Mr. Tom Townsend  
Mr. and Mrs. John L. Trevey, Jr.  
Mr. Keith G. True  
Mr. Bentley Trumpower  
Ms. Martha L. Trunk  
Mr. and Mrs. Mark M. Trusheim  
Mr. Ivaylo Tsekov  
Mr. and Mrs. Gordon A. Tubbs  
Mrs. Catherine Y. Turner  
Mr. Phillip Turner  
Mr. and Mrs. Gerhard Urban  
The Hon. Dr. Kathleen Utgoff and Mr. Victor A. Utgoff  
Ms. Kathryn Valentine  
Ms. Kathryn J. Van Der Kamp  
Mrs. Roberta K. Van Haeften  
Mr. James Van Huizen  
Ms. Kathryn Van Wyk  
Mr. Joseph M. Vaughan  
Mr. James J. Vecchiarelli  
Mr. Karl S. Veit  
Mr. Larry Velte  
Ms. Heidi Veltman  
Ms. Frances L. Ventis  
Mr. Charles E. Ventura  
Dr. Aubrey V. Verdun  
Ms. Lois J. Vinci  
Ms. Nancy Von Euler  
Ms. Christine Vorholt  
W. F. Parker Heating & Air Inc  
Mr. and Mrs. Calvin C. Wagner  
Mr. and Mrs. Frederick C. Wagner, Jr.  
Ms. Patricia M. Wagner  
Ms. Andrea Parker and Mr. Gary E. Waitschies  
Mr. and Mrs. Charles P. Wales  
Walker Chapel United Methodist Church  
Ms. Ginger Walker  
Mr. and Mrs. Patrick J. Wall  
Ms. Lauralie M. Wallace  
Mr. Thomas F. Wallace  
Walmart Foundation  
Mr. and Mrs. Leonard L. Walmsley  
Ms. Amy Walsingham  
Mr. and Mrs. Edward F. Ward, Jr.  
Washington Farm United Methodist Church  
Washington-Lee High School  
Ms. Patricia R. Watson  
Ms. Angela Webb  
Mr. Steven B. Webb

Mrs. Nancy B. Webster  
Mr. Lincoln D. Weed  
Weiss Public Affairs  
Ms. Amy Weiss  
Mrs. Anne Welkener  
Dr. Lee-Anne West  
Mr. and Mrs. M. Dennis Wharton  
Mrs. Toni C. Wheaton  
Ms. Diana White  
Mr. John E. Whitely, Jr.  
Mr. George R. Whitley  
Mr. and Mrs. William “Pete” L. Whitmore, Jr.  
William B. Hopke Co., Inc.  
Mr. and Mrs. Robert T. Williams  
Ms. Susan M. Williams and Mr. Ross Johnson  
Williamsburg Emergency Physicians  
Ms. Leslie Williamson  
Lt. Col. James G. Wilson, USA (Ret.) and Mrs. Pham Liem  
Mrs. Marilyn J. Wilson  
Ms. Nancy L. Wilson  
Mrs. Pamela K. Wilson\*  
Mr. Robert E. Wilson  
Mr. Tom H. Wilson  
Winchester Medical Center, Inc./Valley Health  
Mr. and Mrs. Bruce Winkle  
Mr. Sidney G. Winter, Jr.  
Ms. Gretchen M. Wolfinger  
Mr. and Mrs. Brian Wood

*\*Deceased*

Ms. Carmel Wood and Mr. Dan Lyons  
Mr. and Mrs. James A. Wood, II  
Mr. Michael Wood  
Ms. Teresa Marie Woodard  
World of Hope Golf Classic  
Olam Tikvah  
Mrs. Mary T. Wright  
The Honorable Albert F. Wynn, Sr.  
Mrs. Sheryl D. Yates  
Mr. and Mrs. Michael J. Yurow  
Ms. Marilyn A. Zak  
Mr. and Mrs. Ed Zastawny  
Mrs. Sarah J. Zeigler  
Mr. Paul N. Zierk  
Mrs. Joyce G. Zucker  
Mr. and Mrs. William C. Zuellig  
Dr. and Mrs. George R. Zug



Tom Koutsoumpas, Alva Roche-Green, M.D., Inova Medical Group, Sue Boris, R.N., Chief of Clinical Operations; and Matthew Kestenbaum, M.D., Chief Medical Officer, are shown at the 2018 Passion for Caring Gala.



Dave and Danni Lougee, left, are pictured with Dr. Cameron Muir, Chief of Innovations, and his wife Susan, at the 2018 Passion for Caring Gala.

Capital Caring is a community-based, 501 (c)(3), not-for-profit organization.

To learn more about Capital Caring, visit **capitalcaring.org**.

To request care, please call **1-800-869-2136**.

*Capital Caring's Annual Report is a publication for friends and supporters. It is published yearly and is available at no charge. If you would like additional copies, please call 703-531-6209*

**Publisher**

Capital Caring Marketing and Communication Team

**Editors**

Nancy Cook, Jeff Kost and Amy Shields

**Design**

Hunt Smith Design

CAPITAL CARING HEALTH 2019 BOARD OF TRUSTEES

Tom Koutsoumpas, Chair  
*National Partnership for Hospice Innovation Healthsperien, Founding Member*

Dan D'Agostino, Jr., Treasurer  
*Pacific Western Bank*

Clifford E. Barnes  
*Member of the Firm Epstein Becker Green*

Susan Hargreaves  
*Lisner-Louise-Dickson-Hurt Home*

Lynn Mento, Executive Director  
*Friends of the National Zoo*

William Novelli, Professor  
*McDonough School of Business at Georgetown University Co-Chair, Coalition to Transform Advanced Care (C-TAC)*

Rev. Dr. Tyrone Pitts  
*Progressive National Baptist Convention, Inc.*

# 2018 Year in Review

## REVENUE

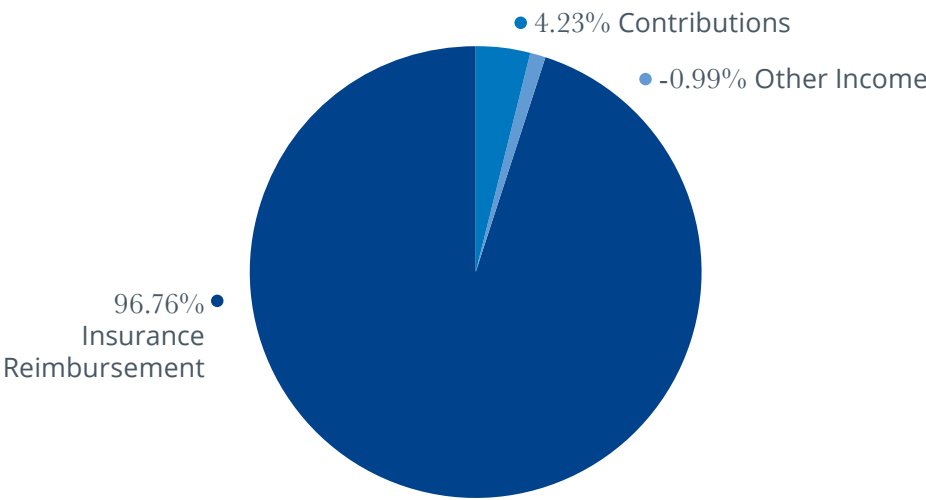
Net patient service revenue	\$91,297,648
Private contributions, gifts & grants	3,712,928
Net investment income	(1,212,447)
Net assets released from restrictions	275,005
Other income	280,066
<b>Total Revenue</b>	<b>\$94,353,200</b>
Additional restricted contributions	\$1,207,637

## EXPENSES

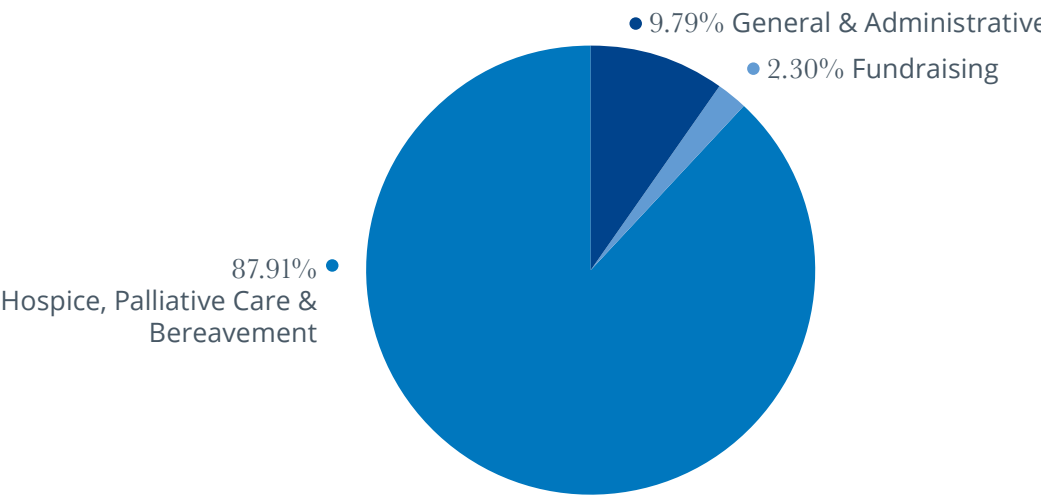
Patient care	\$87,887,285
General & administrative	9,785,861
Fundraising	2,299,725
<b>Total Expenses</b>	<b>\$99,972,871</b>
Results of unrestricted operations	\$(5,619,671)

Almost **90** cents out of every dollar goes to **caring for patients and their families.**

## WHERE DOLLARS COME FROM



## WHERE DOLLARS GO



Donor shares why they support Capital Caring Health

“I support Capital Caring because I know my gift will be put to good use. I hope other families know that in the moments that **really** matter, the care you provide translates into some of the best moments a person will come across in a lifetime. I say this because you cared for my father. Diagnosed with brain cancer at 82, he never flinched, only telling the doctors, my brothers, and me that he ‘wanted to go home.’ Capital Caring, at every step of the way, assisted us in seeing to our father’s well-being. He was at home, surrounded by family, and comfortable. We spent those final days with our father in a setting that promoted an easy, familiar relationship that I’m not sure would have been possible in any other situation. Our gratitude to you is immeasurable.”



## MISSION

Provide Patients and Their Families with  
Advanced Illness Care of the Highest Quality

## VISION

Be the Best Provider of Advanced Illness Care and  
the Best Place to Work in Healthcare

## CARING FOR ONE AND ALL

Capital Caring Health does not exclude people or treat them differently for any reason, including but not limited to: sexual orientation, gender identity, gender expression, religion, diagnosis or medical condition, veteran status, ancestry, marital status, occupation, pregnancy, citizenship, political affiliation, or source of payment.

Capital Caring Health respects the belief system of its patients and their families, and does not impose any belief system on its patients or their families.

**capitalcaring.org**  
**24-Hour Care Line**  
**800-869-2136**